



# KAYTON



# ABOUT COMPANY

Kayton CJSC was established in 2010 and located in Baku, Azerbaijan. Certified ISO 9001: 2015 “Quality Management System» and ISO 45001. We operate in excellence supply rental and maintenance services of construction equipment, vehicles and lifting equipment to choose from our equipment base and offer wide range logistics services. Kayton extends competitive rates and a consistently high level of services to all clients. We value our role in the community, where we recognize the responsibility and opportunity to contribute to society and make a meaningful difference.

## **Mission & Vision:**

Our mission is to provide rental, supply and logistics solutions to our customers and exceed their expectations in service, quality and value. Our goal is to be the best and preferred rental and logistics company in Azerbaijan and offer service beyond customer satisfaction and demand.

## **Values:**

Integrity - We insist on open, honest and fair relationships with our customers.

People - We respect our employees and, value their contributions and as a team, delivering exceptional results to our clients.

Clients - We value our clients as business partners. We are dedicated to providing the highest quality of service to them.



# This is what we do:

Freight Forwarding (air, surface, ocean freight and rail road)  
Customs clearance & Brokerage

Project Logistics  
Consulting and advisory  
Over-weight & over-dimensional cargoes movement  
Charter flights arrangements  
Warehousing

## Our current customers are mainly involved with:

Personal protective equipment, commonly referred to as “PPE”, is equipment, worn to minimize exposure to hazards that cause serious workplace injuries and illnesses

MRO inventory includes consumables, tools and spare parts. Examples includes janitorial supplies, safety equipment, maintenance and repair supplies, technology, office supplies and laboratory equipment



# Kayton's customers goods pick-up points.

## UK – pick-up cities

Cleckheaton, West Yorkshire

WD4 8GW

Suffolk; CB9 7XU

Lancashire

Leeds LS13 2AF

Hertfordshire EN11 0FF

Hight Peak SK23 7HY

Essex CM2 6UN

## UK – pick-up cities

Birmingham

Warrington WA1 4RQ

Bristol BS2 0SU

Aberdeen AB12 3LH

DEVON EX31 1NP

Norfolk, IP25 6NG

Lancs FY6 8JX

Glasgow G65 9JX

## Belgium – pick-up cities

Genk, Belgium

Ardoonie, Belgium

## Italy - pick-up cities

TREZZANO SUL NAVIGLIO –  
MI

20066 Melzo - Milano

24061 Albano S. Alessandro (BG)

36010 ZANE VI-IT

# Kayton's customers goods pick-up points.

Check Republic / Prague  
Austria / Vienna  
Netherland / Rotterdam  
France  
Saint Quentin  
Viados  
Les Echets

China - pick-up cities  
Nanjing, Jiangsu  
WenZhou City, ZheJiang  
Linyi City, Shandong Province  
Dongguan Guangdong

Vancouver, Canada / Grand Prairie,  
TX, USA

# Warehouse facilities we use



AVERAGE NUMBER OF  
SHIPMENTS  
PER MONTH

AIR FREIGHT - 25 IMPORTS  
TRUCKING / CONTAINERS - 15  
IMPORTS

All Kayton activities are performed under HSE department monitoring and summarize the corner stones of our safety concept. Kayton's standards for Quality, Health, Safety and Environment based on the Global ISO 9001, 45001 certifications should be applicable.



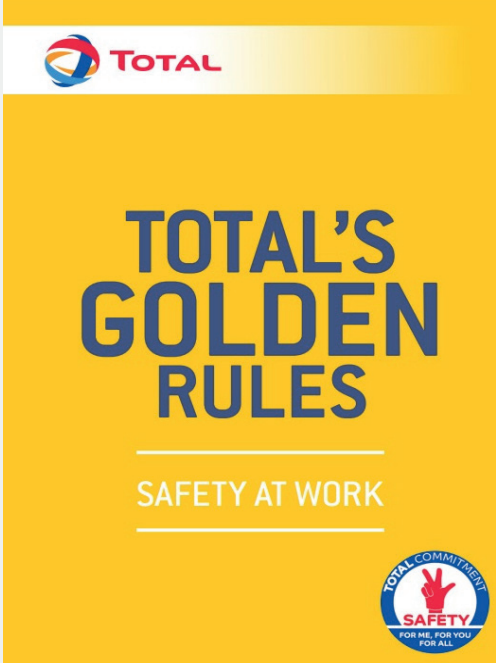
# Expertise in Quality & Safety we have, allow us to comply with tough demands of some Oil & Gas industry giants.



**Golden Rules of Safety**

The Golden Rules provide practical support in the application of BP's Operating Management System (OMS). They are aimed at field personnel - employees or contractors working at BP-operated sites who carry out, or are responsible for, eight activities with particular potential to cause serious injuries or incidents, especially fatalities.

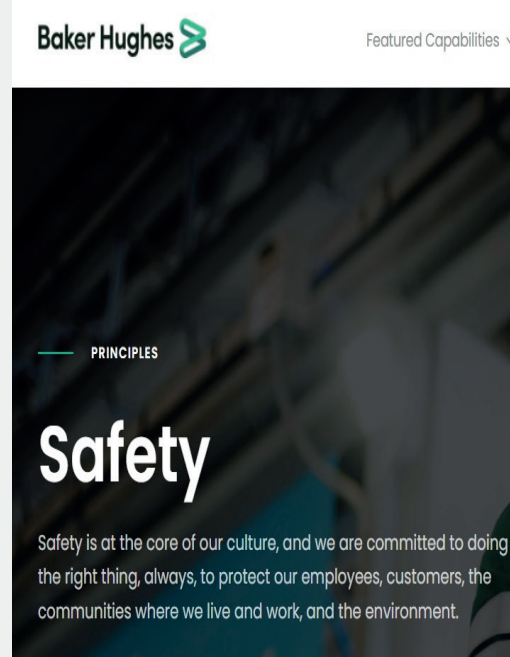
- 1. Permit to work**  
Before conducting work that involves confined space entry, work on energy systems, general disturbance, hot work, or other potentially hazardous tasks, a permit must be obtained that:
  - 1. Details the nature of the work, location, and other relevant details.
  - 2. Identifies the hazards and the location of the work.
  - 3. Specifies control measures to be implemented to manage the risks.
  - 4. Identifies the energy sources that need to be isolated.
  - 5. Details the isolation to be implemented to manage the risks.
  - 6. Lists the work to be completed, and the personnel operations (SOPs).
  - 7. Details the isolation to be implemented to manage the risks.
  - 8. Details the location of the work, including the location of the work.
  - 9. Details the location of the work, including the location of the work.
  - 10. Details the location of the work, including the location of the work.
- 2. Energy isolation**  
Any isolation of energy systems, mechanical, electrical, pneumatic, hydraulic and others, must ensure that:
  - 1. There is a correct method.
  - 2. The correct isolation is used.
  - 3. The correct isolation is used.
  - 4. The correct isolation is used.
  - 5. The correct isolation is used.
  - 6. The correct isolation is used.
  - 7. The correct isolation is used.
  - 8. The correct isolation is used.
  - 9. The correct isolation is used.
  - 10. The correct isolation is used.
- 3. Lifting operations**  
Lifts utilizing cranes, hoists, or other mechanical lifting devices must not proceed unless:
  - 1. A competent person has conducted an assessment of the lift, and determined the maximum lift capacity.
  - 2. The lift is within the lift capacity.
  - 3. The lift is within the lift capacity.
  - 4. The lift is within the lift capacity.
  - 5. The lift is within the lift capacity.
  - 6. The lift is within the lift capacity.
  - 7. The lift is within the lift capacity.
  - 8. The lift is within the lift capacity.
  - 9. The lift is within the lift capacity.
  - 10. The lift is within the lift capacity.
- 4. Driving safety**  
All categories of vehicles, including self-propelled mobile plant, must not be operated unless:
  - 1. The operator is licensed to drive the vehicle.
  - 2. The operator is licensed to drive the vehicle.
  - 3. The operator is licensed to drive the vehicle.
  - 4. The operator is licensed to drive the vehicle.
  - 5. The operator is licensed to drive the vehicle.
  - 6. The operator is licensed to drive the vehicle.
  - 7. The operator is licensed to drive the vehicle.
  - 8. The operator is licensed to drive the vehicle.
  - 9. The operator is licensed to drive the vehicle.
  - 10. The operator is licensed to drive the vehicle.
- 5. Hot work**  
Hot work must not proceed unless:
  - 1. A competent person has conducted an assessment of the hot work, and determined the maximum hot work capacity.
  - 2. The hot work is within the hot work capacity.
  - 3. The hot work is within the hot work capacity.
  - 4. The hot work is within the hot work capacity.
  - 5. The hot work is within the hot work capacity.
  - 6. The hot work is within the hot work capacity.
  - 7. The hot work is within the hot work capacity.
  - 8. The hot work is within the hot work capacity.
  - 9. The hot work is within the hot work capacity.
  - 10. The hot work is within the hot work capacity.
- 6. Working at heights**  
Working at heights of 2 metres (6 feet) or higher above the ground without a fall protection that has passed tests or standards must not proceed unless:
  - 1. A competent person has conducted an assessment of the work, and determined the maximum working at heights capacity.
  - 2. The work is within the working at heights capacity.
  - 3. The work is within the working at heights capacity.
  - 4. The work is within the working at heights capacity.
  - 5. The work is within the working at heights capacity.
  - 6. The work is within the working at heights capacity.
  - 7. The work is within the working at heights capacity.
  - 8. The work is within the working at heights capacity.
  - 9. The work is within the working at heights capacity.
  - 10. The work is within the working at heights capacity.
- 7. Confined space entry**  
Entry to any confined space must not proceed unless:
  - 1. A competent person has conducted an assessment of the confined space, and determined the maximum confined space entry capacity.
  - 2. The confined space entry is within the confined space entry capacity.
  - 3. The confined space entry is within the confined space entry capacity.
  - 4. The confined space entry is within the confined space entry capacity.
  - 5. The confined space entry is within the confined space entry capacity.
  - 6. The confined space entry is within the confined space entry capacity.
  - 7. The confined space entry is within the confined space entry capacity.
  - 8. The confined space entry is within the confined space entry capacity.
  - 9. The confined space entry is within the confined space entry capacity.
  - 10. The confined space entry is within the confined space entry capacity.
- 8. Ground disturbance**  
Work that involves the excavation, trenching, or disruption of the earth's surface formed by earth removal must not proceed unless:
  - 1. A competent person has conducted an assessment of the ground disturbance, and determined the maximum ground disturbance capacity.
  - 2. The ground disturbance is within the ground disturbance capacity.
  - 3. The ground disturbance is within the ground disturbance capacity.
  - 4. The ground disturbance is within the ground disturbance capacity.
  - 5. The ground disturbance is within the ground disturbance capacity.
  - 6. The ground disturbance is within the ground disturbance capacity.
  - 7. The ground disturbance is within the ground disturbance capacity.
  - 8. The ground disturbance is within the ground disturbance capacity.
  - 9. The ground disturbance is within the ground disturbance capacity.
  - 10. The ground disturbance is within the ground disturbance capacity.



**TOTAL'S GOLDEN RULES**

**SAFETY AT WORK**

**TOTAL COMMITMENT SAFETY FOR ME, FOR YOU FOR ALL**



**Baker Hughes** Featured Capabilities

**PRINCIPLES**

# Safety

Safety is at the core of our culture, and we are committed to doing the right thing, always, to protect our employees, customers, the communities where we live and work, and the environment.

# CERTIFICATE



Total Quality. Assured.

## CERTIFICATE OF REGISTRATION

This is to certify that the management system of:

### Kayton CJSC

Main Site: Ashig Molla Juma 46B, Nerimanov dst.,  
Baku, Azerbaijan

has been registered by Intertek as conforming to the requirements of:

### ISO 9001:2015

The management system is applicable to:

Vehicle, Lifting and Industrial Equipment supply, rental and maintenance services and Logistic services

**Certificate Number:** 160310  
**Initial Certification Date:** 10 May 2016  
**Last Certificate Expiry Date:** 09 May 2022  
**Date of Last Recertification Audit:** 11 May 2022  
**Certification Cycle Start Date:** 20 May 2022  
**Issuing Date:** 22 May 2022  
**Valid Until:** 09 May 2025



intertek 014

  
**Calin Moldovean**  
President, Business Assurance  
Intertek Certification Limited, 30A Victory Park,  
Victory Road, Derby DE24 8RZ, United Kingdom  
Intertek Certification Limited is a UKAS  
accredited body under schedule of  
accreditation no. 014.



In the issuance of this certificate, Intertek assumes no liability to any party other than to the Client, and then only in accordance with the agreed upon Certification Agreement. This certificate's validity is subject to the organization maintaining their system in accordance with Intertek's requirements for system certification. Validity may be confirmed via email at [certinfo-uk@intertek.com](mailto:certinfo-uk@intertek.com) or by scanning the code to the right with a smartphone. The certificate remains the property of Intertek, to whom it must be returned upon request.



## Certificate of Registration

OCCUPATIONAL HEALTH & SAFETY MANAGEMENT SYSTEM - ISO 45001:2018

This is to certify that:

Kayton, CJSC  
Nobel avenue 15  
AZURE Business center  
25th floor, office 164  
Baku  
AZ1025  
Azerbaijan

Holds Certificate No: **OHS 755734**

and operates an Occupational Health and Safety Management System which complies with the requirements of ISO 45001:2018 for the following scope:

Vehicle, Lifting and Industrial equipment supply, rental and maintenance services

For and on behalf of BSI:

  
Andrew Launn, EMEA Systems Certification Director

Original Registration Date: 2021-10-12      Effective Date: 2021-10-12  
Latest Revision Date: 2021-10-12      Expiry Date: 2024-10-11

Page: 1 of 1

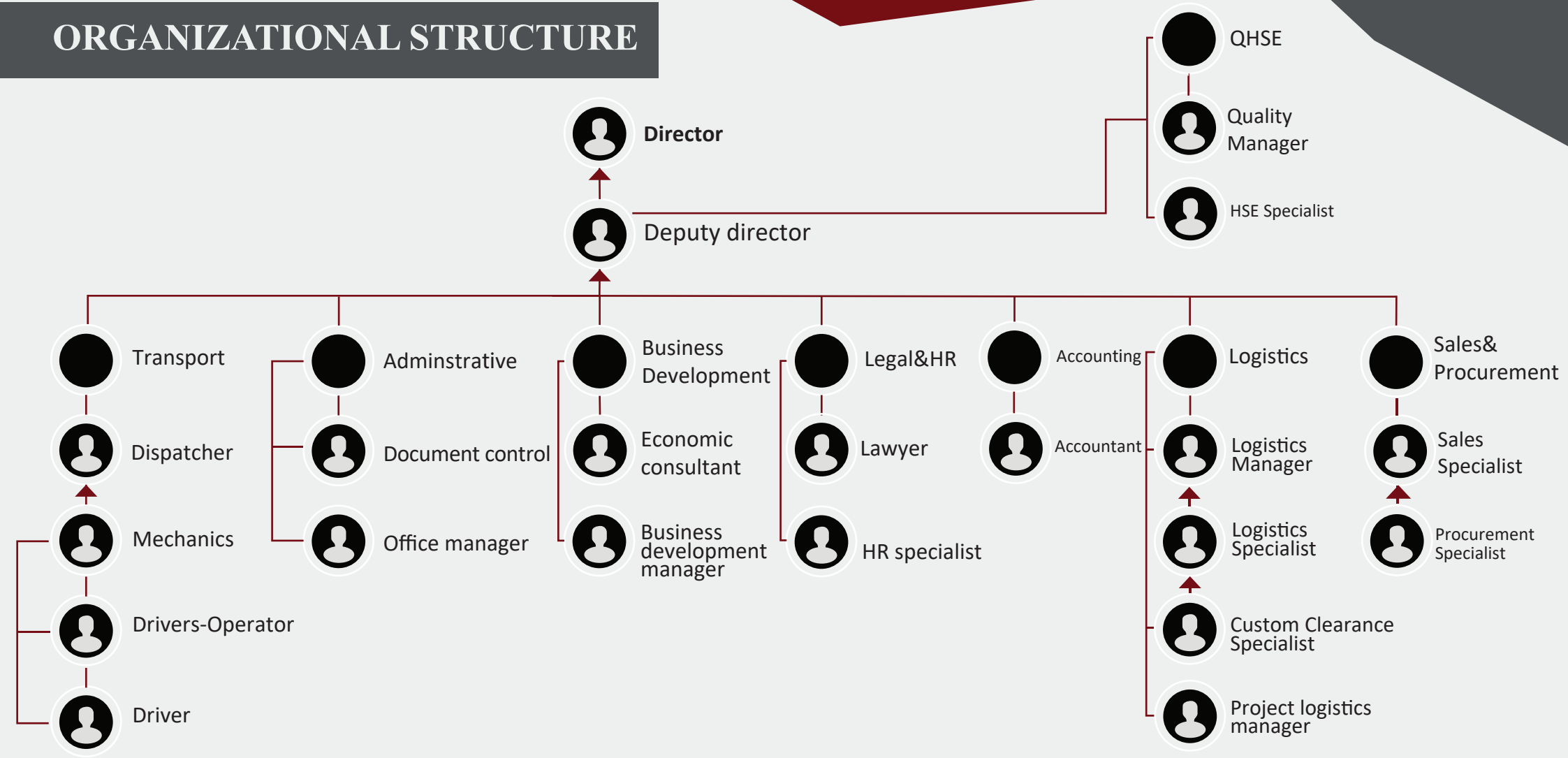


...making excellence a habit.™

This certificate was issued electronically and remains the property of BSI and is bound by the conditions of contract. An electronic certificate can be authenticated [online](#). Printed copies can be validated at [www.bsigroup.com/ClientDirectory](http://www.bsigroup.com/ClientDirectory).  
Information and Contact: BSI, Kitemark Court, Davy Avenue, Knowlhill, Milton Keynes MK9 8RP. Tel: +44 345 080 9000  
BSI Assurance UK Limited, registered in England under number 7805321 at 389 Chiswick High Road, London W4 4AL, UK.



# ORGANIZATIONAL STRUCTURE



# PARTNERS AND CLIENTS







**Address: Ashig Molla Juma 46B,  
Nerimanov dst, AZ1005  
Baku, Azerbaijan**

**Vebsayt : [www.kayton.az](http://www.kayton.az)**

**E-mail: [office@kayton.az](mailto:office@kayton.az)**

**Mob: +99450 218 57 44**

**In: [www.linkedin.com/company/kayton](http://www.linkedin.com/company/kayton)**